



Sovereign Country Homes

Marks Farm
Battlesbridge
Essex SS11 7QR

Tel 01245 328 746 Fax 01245 328 697
Email@sovereigncountryhomes.com

**Plot 1
33A Maldon Road
Danbury
CHELMSFORD
CM3 4QL**

**4 Bed Detached House
With Double Garage**

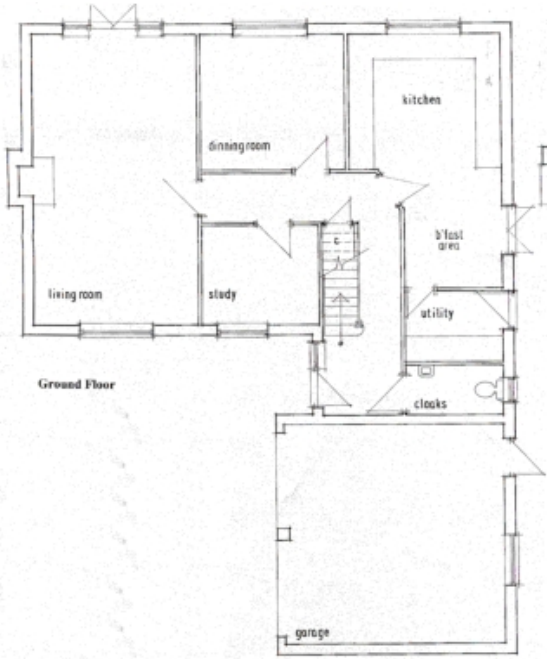


Specification (20/09/2005)

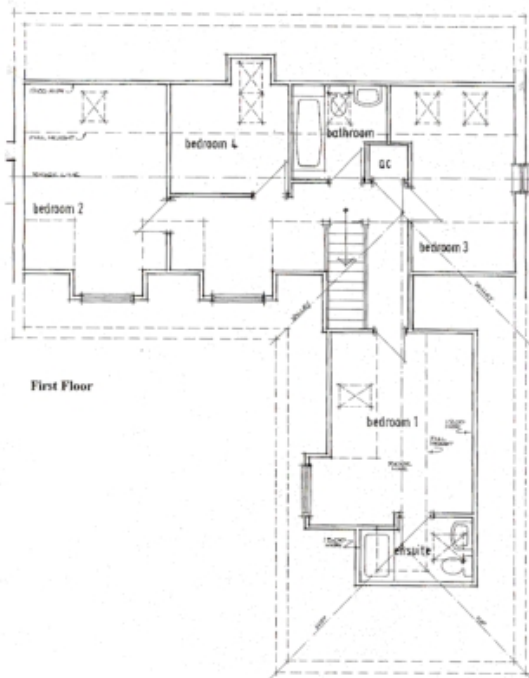
- PVC-u Double Glazed Windows & Doors.
- PVC-u Soffits & Fascia
- Gas Fired Central Heating.
- Hot Water Via A Pressurised System
- Moulded Skirting and Architraves.
- Panelled Internal Doors.
- Brass Door Furniture.
- Karndean Flooring to Hall, Kitchen. Utility and W.C.
- Ornate fibrous plaster to lounge, dining room and hall
- Gyproc cornice to the rest of house
- Smoke Detectors.
- Burglar Alarm System.
- Bathroom Walls Fully Tiled And Fitted With Heated Towel Warmers
- En-suite Walls Fully Tiled And Fitted With Heated Towel Warmers
- Bathrooms Fitted With Back To The Wall Furniture.
- Fully Fitted Kitchen From Robert Michael Interiors Comprising Of The Following;
 - Fully Integrated Fridge.
 - Fully Integrated Freezer.
 - Fully Integrated Dish Washer.
 - Multifunction Oven, Hob, Extractor Hood Stainless Steel.
- Utility Room With S/Steel Sink And Space For Washing Machine And Tumble Drier
- Decorating. Emulsion Walls and White Gloss to Woodwork.
- Front And Rear Garden Grass Seeded.
- 10yr N.H.B.C. Warranty.

Sovereign Country Homes Reserves The Right To Change The Above Specification If Desired.

The information contained with in these pages should not be relied upon as statements or representation of fact. Prospective purchases should note that any *elevations, room sizes, layouts have been taken from plan and may vary as construction takes effect. Any plans are shown for guidance purposes only. (*)These rooms have sloping ceilings which may restrict head height. Measurements quoted have been scaled at floor level.) Any specification shown is correct at the time of publishing/(stated). Prospective purchasers are advised to confirm such details before entering into a binding contract and are also advised to check availability with the local office prior to making a journey E&OE.



Ground Floor **	
Living Room	7x4m 23' x13'1"
Dining Room	3.5x3.2m 11'6" x10'6"
Study	2.8x2.4m 9'2" x7'10"
Kitchen / Breakfast room	3.2x6.1x2.3x3.7m 10'6" x20' x7'7" x12'2"
Utility	2.4x1.6m 7'10" x5'3"
W.C.	2.4x1.2m 7'10" x3'11"
Hall	



First Floor ***	
Bedroom 1	3.3x3.8x4.1x4.5m 10'10" x12'6" x13'5" x14'9"
En suite	
Bedroom 2	3.3x4.3m 10'10" x14'1"
Bedroom 3	2.3x2.9x4.3x1.3m 7'7" x9'6" x14'1" x4'3"
Bedroom 4	2.7x2.5m 8'10" x8'2"
Bathroom	
Airing cupboard	
Landing	

Site Layout

