



Sovereign Country Homes

Marks Farm
Battlesbridge
Wickford
Essex
SS11 7QR

Tel 01245 328 746

Fax 01245 328 697

email@sovereigncountryhomes.com

www.sovereigncountryhomes.com

411A Baddow Road, Chelmsford



Sovereign Country Homes Ltd has over 20 years experience of building new homes in Essex.

Building a wide range of properties from bungalows to 3 story houses, each carefully and uniquely designed to suit their location. All are finished to our high specifications. Including high spec kitchens with integrated appliances, Karndean flooring. En-suite bathrooms. Luxury fitted bathrooms with high pressure* showers, ceramic tiling. Painted in neutral colours with fitted carpets**.

Our finished properties are ready for your RIGHT MOVE to a NEW HOME.

(*homes with high pressure heating systems **subject to home spec)

3 Bed Detached House With Garage

411A Baddow Road
CHELMSFORD
CM2 7QL

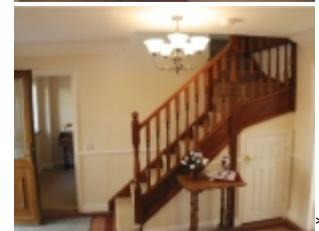


Specification (14/07/2006)

- Fully Fitted Kitchen From Robert Michael Interiors including the following;
 - Fully Integrated Fridge
 - Fully integrated Freezer.
 - Fully Integrated Dish Washer
 - Stainless Steel Oven
 - Stainless Steel Extractor
- Utility Room With Stainless Steel Sink, including:
 - Fully Integrated Washer drier.
- Bathroom Walls half Tiled And Fitted With Heated Towel Warmers
- En-suite Walls half Tiled And Fitted With Heated Towel Warmers
- Karndean Flooring to Hall, Kitchen. Utility and W.C.
- Fitted carpets to rest of house
- Decorating. Emulsion Walls and White Satin to Woodwork
- Moulded Skirting and Architraves.
- Panelled Internal Doors.
- Brass Door Furniture.
- Gas Fired Central Heating
- PVC-u Double Glazed Windows & Doors.
- PVC-u Soffits & Fascia
- Gyproc cornice
- Smoke Detectors.
- Burglar Alarm System.
- 10yr N.H.B.C. Warranty

Sovereign Country Homes Reserves The Right To Change The Above Specification If Desired

Typical room Pictures



*pictures not from this property

