



## Sovereign Country Homes

Marks Farm  
Battlesbridge  
Wickford  
Essex  
SS11 7QR

Tel 01245 328 746

Fax 01245 328 697

[email@sovereigncountryhomes.com](mailto:email@sovereigncountryhomes.com)

[www.sovereigncountryhomes.com](http://www.sovereigncountryhomes.com)

# Sovereign Country Homes Ltd



*(Picture of Leigh Lodge, Hazeleigh)*

Sovereign Country Homes Ltd has over 20 years experience of building new homes in Essex.

Building a wide range of properties from bungalows to 3 story houses, each carefully and uniquely designed to suit their location. All are finished to our high specifications. Including high spec kitchens with integrated appliances, Karndean flooring. En-suite bathrooms. Luxury fitted bathrooms with high pressure\* showers, ceramic tiling. Painted in neutral colours with fitted carpets\*\*.

Our finished properties are ready for your RIGHT MOVE to a NEW HOME.

(\*Large homes with high pressure heating systems \*\*subject to home spec)

## New Home

### 3 Bedroom Detached Bungalow

Leigh Lodge  
Goat House Lane,  
Hazeleigh,  
Chelmsford ,  
CM3 6QY



#### Specification (23/11/2005)

- PVC-u Double Glazed Windows & Doors.
- PVC-u Soffit & Fascia
- Oil Fired Central Heating.
- Hot Water Via A Pressurised System
- Moulded Skirting and Architraves.
- Panelled Internal Doors.
- Brass Door Furniture.
- Karndean Flooring in Hall, Kitchen, en-suite, Utility And W.C.
- Carpets in lounge & Bedrooms
- Gyproc Cornice
- Smoke Detectors.
- Burglar Alarm System.
- Bathroom Walls Fully Tiled And Fitted With Heated Towel Warmers
- En-suite Walls Fully Tiled And Fitted With Heated Towel Warmers
- Bathrooms Fitted With Back To The Wall Furniture.
- Fully Fitted Kitchen From Robert Michael Interiors Comprising Of The Following;
  - Fully Integrated Fridge.
  - Fully Integrated Freezer.
  - Fully Integrated Dish Washer.

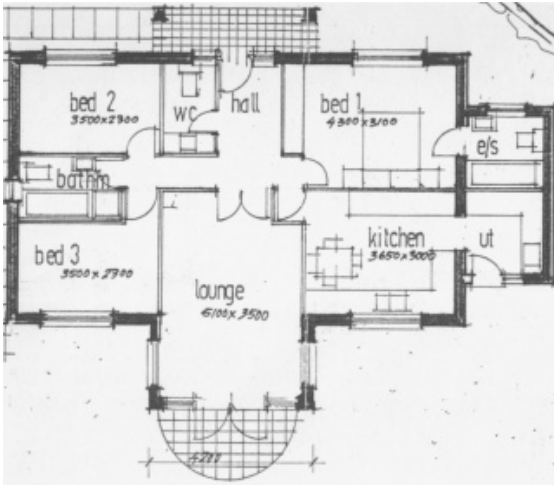


- Multifunction Oven, Hob, Extractor Hood Stainless Steel.
- Utility Room With S/Steel Sink and Integrated Washer Drier
- Decorating. Emulsion Walls and White Gloss to Woodwork.
- Front And Rear Garden turfed.
- 10yr N.H.B.C. Warranty.

Sovereign Country Homes Reserves The Right To Change The Above Specification If Desired.

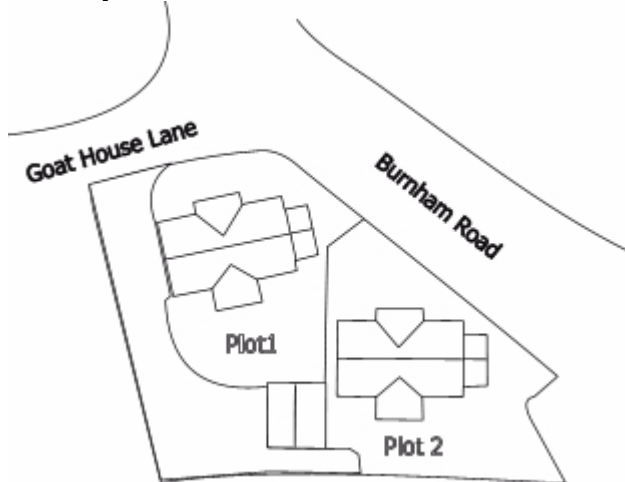
\*\*The information contained within these pages should not be relied upon as statements or representation of fact. Prospective purchasers should note that any elevations, room sizes, layouts have been taken from plan and may vary as construction takes effect. Any plans are shown for guidance purposes only. (\*\*\*) These rooms have sloping ceilings which may restrict head height. Measurements quoted have been scaled at floor level. Any specification shown is correct at the time of publishing/(stated). Prospective purchasers are advised to confirm such details before entering into a binding contract and are also advised to check availability with the local office prior to making a journey. E&OE.

Ground Floor\*



- Lounge 3.5x5.1 m (11'6"x16'9")
- Kitchen 3.6x3m (11'10"x9'10")
- Utility
- Bed 1 4.3x3.1 m (14'1"x10'2")
- En-suite
- Bed 2 3.5x2.3m (11'6"x7'7")
- Bed 3 3.5x2.3m (11'6"x7'7")
- Bathroom
- W.C.

Site Layout



Picture of plot 1 bathroom, same layout



Picture of plot 1 lounge, same layout

\*\*The information contained within these pages should not be relied upon as statements or representation of fact. Prospective purchasers should note that any \*elevations, room sizes, layouts have been taken from plan and may vary as construction takes effect. Any plans are shown for guidance purposes only. (\*\*\*)These rooms have sloping ceilings which may restrict head height. Measurements quoted have been scaled at floor level. (Any specification shown is correct at the time of publishing/(stated). Prospective purchasers are advised to confirm such details before entering into a binding contract and are also advised to check availability with the local office prior to making a journey.E&OE.